

Since 1940

WISCONSIN ENERGY *Cooperative* November 2024 NEWS

TAYLOR ELECTRIC
Cooperative
Your Touchstone Energy Partner

A YARN ABOUT SIEVERS
RENOWNED FIBER ARTS SCHOOL
KNITS PEOPLE TOGETHER

UNIMAGINABLE

SMART HOME TECH
ON A BUDGET

KIDS AND CRITTERS





FUN FOR ALL AT CO-OP MONTH BREAKFAST



Thanks to all of our members who joined us on Friday, October 4, 2024 for the kickoff of October Co-op Month. Breakfast was served to just under 300 members from 6:30 a.m - 9:30 a.m. at the Centennial Community Center.

Members had fun displaying their corn hole skills for a prize and the always popular Green Bay Packers calendars were also given away. The \$30 electric bill credits winners included: Doreen Berger, Linda Daniels, Elda Lou Fettes, Jay Hoover and John Vogedes.

We also had some awesome pumpkin entries from Ian, age 2 and Tessa, age 7. They received a \$25 gift certificate.



Left-right: Secretary/Treasurer Cheri Klussendorf, former Director JoAnn Smith, Director Lisa Kohn, and JoAnn's husband Delmar Smith.

Tessa Davis (right) and Ian Hallgren pictured with his grandpa and Board Chair Brian Hallgren (far right) show off their winning pumpkins.



Retired CEO Mike Schaefer and his wife, Deb, stopped in for a visit.



Left: Members enjoyed breakfast and conversation.

LOAD CONTROL SYSTEM TEST SET FOR NOVEMBER 20

The winter test for Interruptible Heat (Dual Fuel) members is scheduled for Wednesday, November 20. This test is designed to provide you with the opportunity to observe your control device, ensure that the indicator lights on your load-control receiver function properly, and check that your heating system and/or backup heating system is working properly before winter sets in. Residential interruptible heat load classes will be controlled as follows:

Control Start: All Interruptible Heat load classes will begin at 7 a.m.

Restoral: All loads will be restored by noon.

If you notice any problems with the load-management receiver during this test, please contact the cooperative, 715-678-2411. If you find that your heating system does not work as it should, contact your electrician or heating service representative.



DAYLIGHT SAVING TIME ENDS NOVEMBER 3

Remember to turn your clocks back one hour. This is also a good time to change the batteries in your smoke alarms and carbon monoxide detectors.

COOPERATIVE DAY OF SERVICE



Employees from Taylor Electric Cooperative, Jump River Electric Cooperative, Dairyland Power Cooperative and Taylor County Buildings, Grounds and Parks participated in the Cooperative Day of Service.

Taylor Electric Cooperative and Dairyland Power Cooperative kicked off National Co-op Month with the 2nd annual Cooperative Day of Service on Wednesday, October 2, 2024 at Sacketts Lake Rec Area, Medford. The purpose of the event was to improve the communities we serve and are a part of.

Taylor County Director of Buildings, Grounds & Parks Joe Svejda coordinated the project along with Taylor Electric CEO Kenny Ceagske and Vice-Chair Chuck Zenner, as well as Dairyland Power Cooperative Marketing and Communications Coordinator Dana Bolwerk. Participating were Taylor Electric employees Kenny Ceagske, Patti Nelson, Lainie Kellnhofer, Geoff Mueller and Jessie Knoll, as well as board members Brian Hallgren, Chuck Zenner, Cheri Klussendorf, Don Everhard, Lisa Kohn, Dave Makovsky and Paul Woods. Employees from Jump River Electric, Dairyland Power Cooperative and Taylor County

Buildings, Grounds and Parks also assisted.

Taylor Electric CEO, Kenny Ceagske, said “Concern for Community and Cooperation Among Cooperatives are core principles of the cooperative business model. Having our friends from Jump River Electric Cooperative and Dairyland Power Cooperative come to help improve the local park along with Taylor County staff truly highlights both of those principles. It was extremely

rewarding to see all of the improvements at the end of the day.”

The following projects were completed:

- scraping, rebuilding and painting 12 picnic tables
- painting roof lines of structures and sealing floor and roofs
- painting the interior of the ladies bathroom, concession area and doors
- taking down trees and clean up of debris by the beach and volleyball area
- replaced post on pavilion and adjusted and leveled roof
- replacing posts that line the parking lot and lawn area
- edging/shouldering the road into the parking lot
- adding rock to the end of the boat landings

Dairyland coordinated six service projects throughout their service territory in Wisconsin, Minnesota, and Illinois.

We are proud to have bettered our community for October Co-op Month.



Taylor Electric Director Dave Makovsky (left) and CEO Kenny Ceagske (right) work on rebuilding picnic tables.



Taylor Electric Vice Chair Chuck Zenner unloads rocks at the end of the boat landing.



TAYLOR ELECTRIC AMONG WI CO-OPS TO AID IN SOUTH CAROLINA RESTORATION EFFORTS

On October 2, Taylor Electric was among 15 Wisconsin electric cooperatives that sent linemen to aid in storm recovery after Hurricane Helene left catastrophic damage in Aiken, South Carolina, leaving Aiken Electric Cooperative's service area in shambles.

Line Superintendent Wade Matyka, along with TEC Linemen Justin Fuchs, Mike Eloranta, Tim Habermeyer, and Colten Cummings, left early that day to meet up with the Wisconsin caravan leaving from Rock Energy Cooperative in Janesville. Upon their arrival in Aiken, the crew encountered widespread devastation—trees, branches, and debris were tangled in downed power lines, adding time and complicating an already challenging repair effort.

They worked long hours in high temperatures and had to remain cautious of various snakes and spiders, unlike any found in Wisconsin. Their temporary lodging nicknamed “Tent City,” was shared with linemen from all over the country.

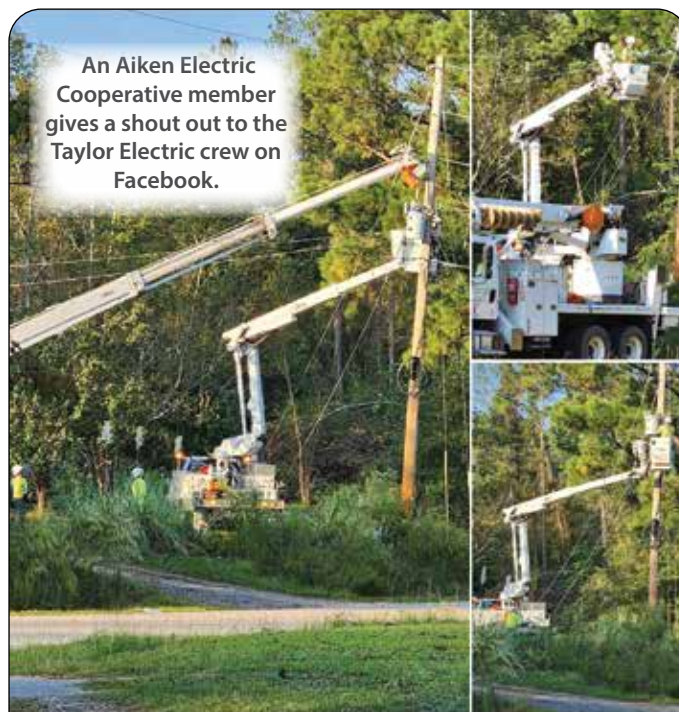
After nearly two weeks, they returned home the weekend of October 12. Despite the long days, the experience was rewarding. Members of Aiken Electric expressed gratitude whenever they spotted a utility truck coming down the road. As one woman noted in a Facebook post, “We begged God to send us a hero. He replied, ‘I’ll do better than that... I’ll send you a lineman’”

We take pride in the positive representation of Wisconsin electric cooperatives and commend Taylor Electric’s crew and all the linemen for their hard work in this critical time of need.

Tim Habermeyer places Hurricane Disaster Relief magnetic signs on the trucks before departing for South Carolina.



Taylor Electric linemen l-r: Justin Fuchs, Tim Habermeyer, Mike Eloranta, Colten Cummings and Line Superintendent Wade Matyka.



An Aiken Electric Cooperative member gives a shout out to the Taylor Electric crew on Facebook.



I know you probably get hundreds of messages a day, but I really want to give a shoutout to Taylor Electric Co-op from Wisconsin. These guys are so amazing! They traveled over 18 hours to Edgefield, SC to assist with relief efforts here. I watched in awe as they made such a difficult job look so easy. When they finished and I flipped my main breaker on for the first time in 12 days, I can't even explain all the emotions I felt. Yes, there is still damage here. Yes, there is still so many other things to do. But the instant relief I felt from what has proved to be one of the greatest challenges here was an amazing feeling. I honestly didn't even realize how much I take it for granted until all of this. I am so grateful for each and every lineman and have the utmost respect for both them and their families for the sacrifices they make.

I've seen multiple companies from several different states working non-stop, rotating shifts, 24 hours a day. They are beyond exhausted and missing their families, but they continue pushing through because they know they are our only hope at finding a sense of normalcy in the midst of this chaos. Saying thank you just isn't enough.

We begged God to send us a hero. He replied, "I'll do better than that...I'll send you a lineman."

Thanks Samantha

[#linelife](#) [#journeymanlineman](#) [#powerlineman](#)
[#linelifefoundation](#) [#beardedangels](#) [#LinemanLife](#)
[#ElectricalSafety](#) [#UtilityWorkers](#)
www.linejunk.com
[#lineman](#) [#linejunk](#) [#woodclimber](#) [#brotherhood](#) [#helene](#)
[#Hurricanehelene](#) [#milton](#) [#hurricanemilton](#)

IS A DUCTLESS MINI-SPLIT SYSTEM RIGHT FOR YOUR HOME?

How would you like a personalized comfort zone within your home? One where the temperature is customized to your liking and may be different than the temperature in the shared living areas or other rooms in the house. This flexibility and customization are precisely why mini-split systems, also known as ductless air-source heat pumps, and their energy efficiency aspects are so popular.

Let's unpack some mini-split basics and explore whether this type of system is a good choice for your home heating and cooling needs.

A mini-split system is a type of HVAC equipment used for heating and cooling, allowing you to control the temperature in individual rooms or spaces. Similar to central heating and cooling, mini-split systems have two main components—an outdoor compressor and an indoor air-handling unit(s). A narrow conduit links the indoor unit(s) to the outdoor compressor.

While central heating and cooling systems feature an indoor unit connected by long lengths of ductwork, mini-splits are typically ductless. This means energy is not lost traveling through long stretches of ductwork. Installing the air-handling unit in a desired room or area enables you to control the temperature more precisely, reducing energy consumption. That's because you're adjusting the temperature to a single room or space rather than the whole home.

Is a mini-split system right for you?

Mini-split systems are a popular option in home additions, or to supplement heating and cooling in a space that may be furthest away from the main living area, such as a finished attic or basement. In these instances, it may not be feasible to install or extend the ductwork required in traditional central cooling and heating systems. In contrast, mini-splits are relatively easy to install requiring a small hole for the conduit connecting the indoor and outdoor units. Most systems can handle up to four indoor rooms or zones connected to one outdoor unit. Each of the zones can be customized because each includes a thermostat that enables you to heat or cool the space as needed, saving energy and money over time.

Cool solutions

Mini-split systems bring additional benefits. They are quiet, improve indoor air quality and are typically easy to install. Many come with remotes to make temperature control even easier, and because of their smaller size, mini-split systems have many placement options for indoor and outdoor units.

One of the greatest benefits of mini-splits is that they typically have a higher SEER (seasonal energy efficiency ratio) rating than traditional central heating and cooling systems. The higher the unit's SEER rating, the more energy efficient it is.

Additional considerations

However, according to the Department of Energy, "mini-splits cost about \$1,500 to \$2,000 per ton of cooling capacity. That's about 30% more than central systems (not including ductwork) and may cost twice as much as window units of similar capacity."

While the technology is improving and evolving, those in particularly colder climates may need a fuel backup to run a mini-split system. Aesthetics are another factor to consider, as some homeowners don't like the appearance of the indoor units, which are more visible than central air conditioning vents.

If you're considering an upgrade or additional heating and cooling equipment, talk to a qualified technician to learn if a ductless mini-split system could work for your home.

MINI-SPLITS AT A GLANCE

Mini-split systems, also known as ductless air-source heat pumps, heat/cool a home through an outdoor unit that connects to one or more individual indoor air handlers, which are typically mounted on a wall. Depending on the size of your home and personal preferences, a mini-split system is worth considering when you need to replace or upgrade your heating/cooling system.

Mini-Split System Benefits:

- Zone-controlled heating/cooling
- Higher energy efficiency ratings
- Easy to install
- Good for heating/cooling home additions

Mini-Split System Considerations:

- Potentially higher upfront cost
- Appearance
- May require electrical upgrades
- Not as effective in large spaces



Kenneth Ceaglske, President/CEO

N1831 State Highway 13, Medford, WI 54451

715-678-2411 • 800-862-2407

email: taylrec@taylelectric.org

website: www.taylelectric.org

Lainie Kellnhofer, Editor

TAYLOR ELECTRIC
Cooperative



Your Touchstone Energy® Partner

