

RECIPES

EVENTS

CO-OPS VOTE

Since 1940

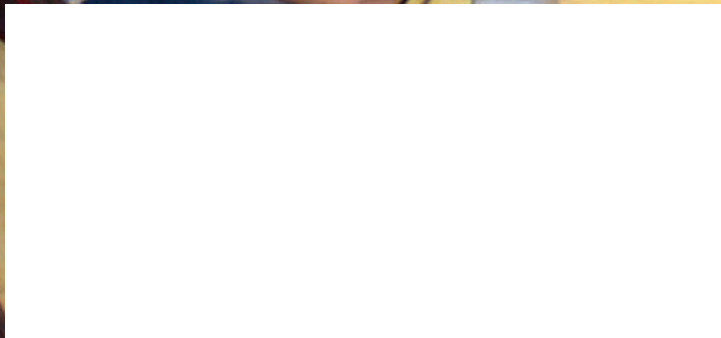
# WISCONSIN ENERGY *Cooperative* NEWS

September 2016

## *Tons of Treasures*

TAYLOR ELECTRIC  
*Cooperative*

Your Touchstone Energy® Partner







Your Touchstone Energy® Partner

# Youth Leadership Congress highlights the COOPERATIVE DIFFERENCE

Understanding the cooperative difference and identifying traits of leaders are just two of the topics that highlighted the 53rd WECA Youth Leadership Congress (YLC) held July 13–15, 2016, on the UW–River Falls campus. Wisconsin Electric Cooperative Association offers the opportunity to participate in the YLC to high school students throughout the state. The conference was co-sponsored by Wisconsin’s electric cooperatives and the University of Wisconsin–River Falls. Students representing Taylor Electric included Erin Elsner, Medford; Selena

Birkholz, Medford; and Bryanne Brugger, Rib Lake.

Through a mix of workshop sessions, hands-on activities, and team-building experiences, participants explored their leadership potential and tackled a variety of real-life issues, including tasks involved in running a cooperative. Renowned professional speakers, teen peers, and exceptional cooperative employees led interactive sessions that taught students about the cooperative business model as well as the art of cooperation.

Dr. David Trechter, UW–River Falls,



2016 YLC participants: (r to l) Selena Birkholz, Bryanne Brugger, and Erin Elsner

MY CO-OP



Above: Teens from across Wisconsin gathered at the 53rd annual Youth Leadership Congress at UW–River Falls on July 13–15, 2016. The conference is a great chance to make new friends, learn about cooperatives, and experience life on a college campus. Right: Taylor Electric’s Bryanne Brugger (left) participates in one of many hands-on activities.



opened the conference with a discussion about the impact co-ops have on our everyday lives, and hypnotist Dr. Al Snyder followed with the evening entertainment. Also featured was nationally acclaimed speaker Craig Hillier. As a part of his dynamic presentation, Hillier enlightened students about being leaders, stretching their creativity, and discovering the value of cooperation.

Other sessions focused on how and why co-ops operate and the benefits they provide members, alternative energy options, careers in electric cooperatives, and hotline demonstrations.

The YLC is a fun, educational, and unique event that is planned by and for teens. Six students are elected by their peers each year to serve on the WECA Youth Board. The Youth Board then plans and conducts next year’s program. Youth Board members are also eligible to attend the National Rural Electric Cooperative Association (NRECA) Youth Tour in Washington, D.C., in June.

Youth Leadership Congress is a great opportunity for our young members to learn more about cooperatives and develop leadership skills.



## Stay focused on *safety* during harvest

**D**uring harvest season, many farmers reap the benefits of advancement in agricultural technology. With the help of GPS auto-steer devices, farmers are able to decrease driver error and maximize productivity. Yet despite these advances, safety risks remain. To help farmers stay out of harm's way, Safe Electricity shares tips for a safe harvest.

GPS with auto-guidance provides farmers with real-time location data about a field, which can be used for crop planning, map making, navigation assistance, and machinery guidance. During harvest, this technology allows drivers to have their hands off the steering wheel as the combine maneuvers itself through the field. Thanks to this technology, farmers can more easily and efficiently maintain accuracy even during low-light conditions, which enhances productivity.

"One critical part of safety around electricity is awareness," explained Kyla Kruse, communications director of the Safe Electricity program. "It's important to remember that farm machinery is vulnerable to hitting power lines because of its large size, height, and extensions. Being aware of the location of overhead power lines and planning a safe equipment route can help reduce accidents."

In equipment with auto-guidance systems, less focus is needed on steering, which may lead some drivers to think they do not need to be as aware of navigation issues. However, even while using a GPS with auto-steering, farm workers need to keep safety in mind and stay focused on their surroundings.

Putting safety first requires alertness, focus, and knowledge of potential hazards and safety steps. Varying pass-to-pass accuracy levels and potential issues, such as power poles not being correctly plotted in the system, reinforce the need for drivers to stay focused on the location of the farm equipment while in the field and to be ready to take action if necessary.

Regardless of the technology used on the farm, keep the following electrical safety guidelines in mind:

- Use a spotter when operating large machinery near power lines.
- Keep equipment at least 10 feet from power lines—at all times, in all directions.
- Look up and use care when moving any equipment such as extending augers or raising the bed of grain trucks around power lines.
- Inspect the height of farm equip-

ment to determine clearance.

- Always set extensions to the lowest setting when moving loads to prevent contact with overhead power lines. Grain augers should always be positioned horizontally before being moved.
- Never attempt to move a power line out of the way or raise it for clearance.
- If a power line is sagging or low, contact Taylor Electric Cooperative at 715-678-2411.

If your equipment does make contact with a power line, do not leave the cab. Immediately call 911, warn others to stay away, and wait for the utility crew to cut the power.

The only reason to exit equipment that has come into contact with overhead lines is if the equipment is on fire, which is rare. However, if this is the case, jump off the equipment with your feet together and without touching the ground and machinery at the same time. Then, still keeping your feet together, hop to safety as you leave the area.

For more information on electrical safety, visit [SafeElectricity.org](http://SafeElectricity.org). The Energy Education Council is a non-profit membership organization providing consumer safety and energy efficiency materials to more than 400 co-ops.



## School is back in session!

School begins on September 1! Help keep our kids safe by driving with caution in school zones. If a school bus is displaying a flashing, alternating red light with a stop sign extended, all drivers of vehicles must stop.



## TAKE ADVANTAGE OF THESE SAVINGS WITH YOUR CO-OP CONNECTIONS CARD!

### **Broadway Theater, Medford**

Purchase any size popcorn and get a matching size soda for free.

### **Carquest Auto Parts, Medford**

10% discount on purchases up to \$200.

### **C&D Lumber, Rib Lake**

5% off single purchase over \$500. Not good in conjunction with other coupons or other offers.

### **Computer TR, Abbotsford**

10% off on labor.

### **Glass to Go, Inc., Medford**

5% off in-shop windshield replacement. Buy one Rain-X Wiper Blade, get second blade half off.

### **Heartland Cooperative Services Athens, Dorchester, Greenwood, Hamburg, Owen**

10% discount on all dog and cat food.

### **Holmes Studio East, Medford**

10% off on studio family portraits including sessions.

### **Jack's Auto Repair LLC, Stetsonville**

10% off exhaust repairs over \$50, 10% off any brake related parts & labor.

### **Life's High Points Photography, Medford**

15% discount

### **McDonald's, Abbotsford, Medford, Stanley and Thorp**

One free biscuit sandwich with the purchase of a medium or large size McCafe beverage.

### **Medford Health Mart Pharmacy, Medford**

20% off any Health Mart label.

### **Meyer Auto Body, Medford**

5% discount on any body repair over \$500. Up to a \$100 value.

### **Meyer Lumber, Dorchester**

5% discount on discountable items, excluding all sale and clearance items (cash sales only). Cannot be used in conjunction with any other discounts/promotions. Card must be presented at each purchase.

### **Meyer Tire and Service, Medford**

\$5 off any passenger or light truck tire. Not good in conjunction with any other coupons or offers.

### **Mypride Kennel, Medford**

10% off grooming or boarding services.

### **Napa Auto Parts, Medford**

10% discount on cash & carry items (excludes engines, engine kits, transmissions, oil labor & sale items).

### **Northwoods Embroidery, Medford**

Free digitizing on embroidery. Free set up on first color of screen printing.

### **Pernsteiner Carpets, Medford**

Cost plus 10% on 10 yards per year of ordered in carpet or vinyl.

### **Ron's Auto Body Repair, Medford**

10% off for anyone over 55 or older on labor.

### **Schierl Tire & Service Center, Medford**

\$5 off an oil change. \$10 off parts for service repairs.

### **Stetsonville Lumber, Stetsonville**

5% off single purchase over \$500. Not good in conjunction with other coupons or offers.

### **Stetsonville Oil Company, Stetsonville**

\$5 off oil lube filter service.

### **Strama's Self-Serve, Medford**

Buy one ice cream (cone or dish) and get the second half price.

### **Subway, Medford & Colby**

50¢ off any sub or salad.

### **Taylor Credit Union, Medford and Abbotsford**

Free rental for one year on 3"x5"x22 1/2" safe deposit box – new rentals only. Requires existing savings account or initial savings account with \$5 balance. Limit one per family.

### **Wanke Builders, Medford**

Free foundation waterproofing on your new home purchase.

### **Willow Cottage Pet Grooming, Medford**

\$5 off full groom service.

MY CO-OP





## COOPERATIVES DRIVE DEMOCRACY

By Adam Schwartz

It has often been said that those who cannot remember the past are condemned to repeat it. It is easy to take our right to vote for granted, maybe because there are so many opportunities to exercise that right. There are national, state, and local elections for political offices. Then there are elections for social or other civic organizations. If you own stock, you are asked to vote in those elections. So it is understandable to see how “election fatigue” can take hold.

As we head into the final stage of what has been a divisive national election, it is a good time to remember that elections don’t have to be about name calling and bitterness. Co-ops can and do play a role in cultivating a civil society where people can practice democracy at the hyper local level. As a member of Taylor Electric Cooperative, you have the right to run for the board of directors. Even if you choose not to have that level of participation, you should feel empowered to reach out to current board members and candidates.

The beauty of belonging to a co-op is every member has a voice, but you must use that voice if you want to be heard on the issues that matter to you. In their document, “A Blueprint for a Cooperative Decade,” the International Cooperative Alliance, a global organization made up of co-ops from over 100 countries, identified member participation as one of the five key ingredients for a co-op to be successful.

Voting and being actively involved in the affairs of the co-op are key ways in which members can participate. Take the time to get to know candidates running for Taylor Electric’s board. Seek out ways that you can help spread the word about the good work your co-op is doing.

The cooperative business model is a great one; it fosters engagement and creates strong communities. Over 100 years ago, President Theodore Roosevelt recognized this value when he said, “The cooperative is the best plan of organization. Under this plan, every business is [governed by a board], every person has one vote and only one vote. Everyone gets profits based on their use of the co-op. It develops individual responsibility and has a moral as well as a financial value.”

Those words are truer today than ever before. Let your voice be heard, and take the time to participate in all the elections.

Adam Schwartz is the founder of The Cooperative Way, a consulting firm that helps co-ops succeed. He’s an author, speaker, and member-owner of the CDS Consulting Co-op. Follow him on Twitter @adamcooperative or email, aschwartz@thecooperativeway.coop.

### Michael Schaefer, President/CEO

N1831 State Highway 13, Medford, WI 54451  
715-678-2411 • 800-862-2407  
email: taylrec@tayloelectric.org  
website: www.tayloelectric.org

### Lainie Kellnhofer, Editor

## LABOR SAFELY ON LABOR DAY

By Christine Grammes

For many people, Labor Day is a day of rest. For others, it’s a day to catch up on outdoor home projects before the season changes. Faulty extension cords are often a source of injury when working outside, as well as metal ladders coming into contact with an electrical source. By following the tips below, you can “labor” safely on Labor Day.

- Check power tools and electrical cords to make sure they are in good condition. Power tools should be designed for outdoor use.
- Extension cords should be designed for outdoor use. They are thicker, more durable, and have features for preventing moisture damage.
- Use three-wire extension cords with three-pronged plugs.
- Look for the amperage rating of the extension cord to make sure it will meet the power demand of the tool.
- Do not plug one extension cord into another. Use the proper length for the job.
- Never leave an open extension cord that is plugged into an outlet. Unplug the cord when you’re finished using it.
- Use fiberglass or wood ladders when working around overhead power lines or electrical sources. Metal ladders conduct electricity and can be fatal if the ladder comes into contact with electricity. If you must use metal, carefully check for overhead wires to avoid contact.
- Lower the ladder when carrying it or moving it.
- When placing the ladder on the ground, make sure the distance to the nearest overhead wire is at least twice the length of the ladder.

### Taylor Electric’s office will be closed Monday, September 5, for Labor Day.

Christine Grammes is a freelance writer specializing in energy and cooperative affairs. Source: Consumer Product Safety Commission, Central Alabama Electric Cooperative



Taylor Electric’s Member Appreciation Day will be held on Thursday, October 6, at the Stetsonville Centennial Center from 11 a.m.–2 p.m.

Watch next month’s *Wisconsin Energy Cooperative News* for more details!



Your Touchstone Energy® Partner

