

RECIPES

EVENTS

JOB WELL DONE

Since 1940

# WISCONSIN ENERGY *Cooperative* NEWS

November 2017

## Valuing VETERANS

HEALING WAR'S  
INVISIBLE WOUNDS

TAYLOR ELECTRIC  
*Cooperative*

Your Touchstone Energy Partner





## Christmas Wish Program

You can make someone's Christmas a little brighter by participating in the 21st annual Christmas Wish program.

For more than 20 years, Taylor Electric has sponsored this program, making wishes come true for those whose spirits could use a little lift during the holidays. It's just one of the ways we practice the Seventh Cooperative Principle, Concern for Community.

Watch next month's issue of the *Wisconsin Energy Cooperative News* for more details about this year's program. For more information, contact WIGM/WKEB radio at 715-748-2566.



**Our office will be closed November 23 and 24.  
 Have a safe and enjoyable holiday weekend!**

## GROWING UP CO-OP

By Michael Schaefer

I love the feeling of being able to walk into my favorite locally owned shop, restaurant, or store knowing that the profit, product, and labor can make positive impacts on my community. The spirit of main street is embodied in these local businesses, just like it is in Taylor Electric.

Electric cooperatives are as local and community centered as they come. Founded as a way to bring electricity to communities that didn't interest investor-owned utilities (IOUs), electric cooperatives have been a cornerstone of community and economic development in rural America and beyond for decades.

That feeling I get when I frequent local businesses in our community is the same feeling I get when I walk into work at the

**I hope you view Taylor Electric...as a local business that brings pride and prosperity to our community.**

co-op every day. It is a feeling of pride. I am proud to be a part of an organization that serves the community in which we live, instead of a group of shareholders who may never have set foot in our service territory.

Living on co-op lines is more than just knowing there are people out there working to bring you safe, reliable, and affordable electric service. Living on co-op lines is an investment in our community and its members.

You see, Taylor Electric is a not-for-profit business. When we make more money than we need to keep the lights on safely, affordably, and reliably, we return it back to our members (that's you!) in the form of capital credits. This means after all co-op expenses are paid, any additional money we earn goes back into our community, instead of going into a shareholder's pocket, which is pretty great!

And because we are owned by you, our members, we have a vested interest in making sure our community is prosperous. We do this by investing in economic development and community service projects and programs such as Christmas Wish, Bright Horizons—community solar, scholarships, and other youth programs.

I hope that you view Taylor Electric not just as your electric utility provider, but as a local business that brings pride and prosperity to our community. If you are interested in learning more about how we keep the lights on and beyond, please stop by the co-op or give us a call. We love being a part of this community, and we hope you feel the same way too!



# Cooperation Among Cooperatives

## Taylor Electric linemen among Wisconsin contingent that helped with recovery efforts after Hurricane Irma

Wisconsin electric cooperative linemen were among many throughout the country to aid in electric restoration in Florida after Hurricane Irma caused extensive damage. Taylor Electric employees Geoff Mueller and Mike Eloranta left Monday, September 11, with a convoy of volunteer line crews from 18 Wisconsin electric cooperatives.

Cooperatives in 23 states dispatched some 5,000 workers to areas damaged by Hurricane Irma in South Carolina, Georgia, and Florida. Damage was less widespread as the storm tracked northwest, and crews assigned to those areas redeployed to Florida where more intense destruction occurred.

Working 16-hour days beginning Thursday, September 14, the Wisconsin crews finished restoring power to all members in their assigned portion of Clay Electric's 14-county service area by 5 p.m. Sunday, September 17. Using data from the Florida Division of Emergency Management and NOAA's National Hurricane Center, the U.S. Energy Information Administration (EIA) said Irma's winds declined to 50–100 miles per hour passing through northern Florida Monday morning, September 11, at about the same time the Wisconsin

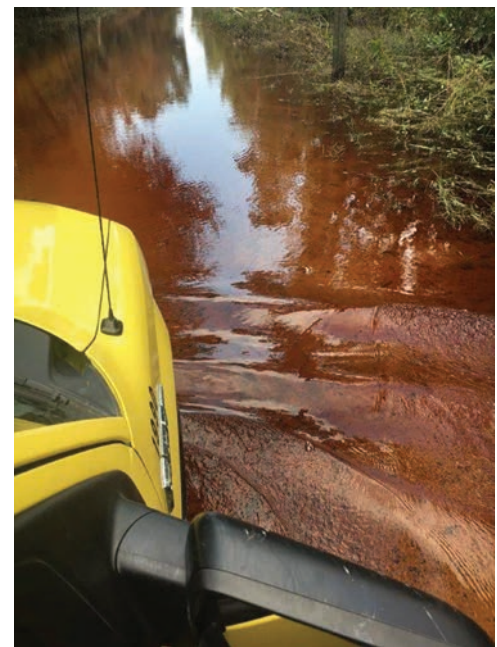


Geoff Mueller and Mike Eloranta of Taylor Electric Cooperative

crews were forming their relief convoys.

But the weakening storm—after land falling in the Keys as a category 3 hurricane—still held enough violence to disable an estimated three-fourths of the Clay Electric distribution system. According to the EIA, as many as 6.7 million Florida electricity customers—almost two-thirds of all statewide accounts—lost power. When Wisconsin crews began work on the 14th, about 60,000 Clay Electric members lacked electricity.

In a September 16 email update, Oconto Electric Line Superintendent Jack Parly, leading the relief contingent,



Line workers captured these images showing conditions they worked in for a week as they helped restore power to members of Clay Electric Cooperative in Florida following Hurricane Irma.

described the daily routine: “We have breakfast at our staging area then a tailgate for any issues or concerns. I remind them priority number one is their and crew safety. We all came here together, we go home together. Head on a swivel, gloves and grounds!”

The return trip to Wisconsin began early Monday morning, September 18. The remaining crews had all but a handful of Clay Electric’s 170,000 members receiving service, and the Florida State Emergency Response Team indicated that 99.7 percent of all accounts statewide had power restored by Thursday, September 21. Geoff and Mike also returned to work at Taylor Electric on Thursday, September 21. We again thank them for displaying two of the seven cooperative principles: Cooperation Among Cooperatives and Concern for Community.



Geoff Mueller and Mike Eloranta (fourth and fifth from the right) joined line workers from electric cooperatives in northern Wisconsin at Eau Claire Energy Cooperative before meeting up with crews from 12 other electric co-ops at Rock Energy Cooperative in Janesville. From there, the group traveled as a convoy to the Gainesville, Florida, area to help restore power to members of Clay Electric Cooperative after Hurricane Irma.

## LOAD MANAGEMENT SYSTEMS TO BE TESTED THIS MONTH

The Winter Test for Interruptible Heat (Dual Fuel) Members is scheduled for Wednesday evening, November 15. This test is designed to provide you with the opportunity to observe your control device, ensure that the indicator lights on your load-control receiver function properly, and check that your heating system and/or backup heating system is working properly before winter sets in.

Residential Interruptible Heat load classes will be controlled as follows:

### Control Start

All Interruptible Heat load classes will begin control at 5 p.m. without pre-alert.

### Restoral

Miscellaneous Heat loads (class 4B) will be restored at 8 p.m. All other Interruptible Heat loads (classes 2A, 2B, 2C and 2W) will vary in restoral, beginning at 9 p.m., with all loads restored by 10:30 p.m.

If you notice any problems with the load-management receiver during this test, please contact the cooperative, 715-678-2411. If you find that your heating system does not work as it should, contact your electrician or heating service representative.

# DAYLIGHT SAVING TIME

Don't forget to fall back on **November 5!**  
Set your clocks back by one hour.





# We may be king for you!

**T**hese former members of Taylor Electric Cooperative have not cashed their capital credit checks. If you know the current address of someone listed here, please contact us at 715-678-2411 or email us at [taylrec@tayloelectric.org](mailto:taylrec@tayloelectric.org). In cases where the person is deceased, please call us if you know the contact information for a relative or benefactor who may have rightful claim to the capital credits. Any unclaimed checks will revert to the Wisconsin Federated Youth Foundation, Inc. The Foundation is a charitable tax-exempt trust established by the Wisconsin Electric Cooperative Association for educational purposes.

Aabel, Judith  
Adams, Dale  
Agri Bank  
Albert, Estate Ed  
All Season Storage  
Anderson, Michael J  
Angelich, Lorna Est  
Areas Leasing Corp  
Arlyn, Pautz Estate  
Armstrong, Renee B  
AT&T Building Operation  
Bacholl, Tammy  
Barina, Robert  
Bauman, Charles  
Becker's Catering  
C/O Brian Becker  
Benson, John  
Bergstrom, Todd S  
Bernitt, Estate William Jr  
Brandt, William W  
Brede, Jeffrey  
Bruesewitz, Sherry  
Burdreau, Brian  
Busch, Rick  
Carr, Nancy  
Carr, Shannon  
Carr, Shawn  
Central Sand & Gravel Inc  
C/O Larry Kloth  
Cliver, Christine  
Cox, Wendell  
Cushing, David E  
Degrand, Steve  
Dept of the Air Force  
Devoty, Amie Estate

Devries, David  
Dunst, Roxann  
Dvorak, Chester  
Ebeltoft, James C Estate  
Edminster, Peggy J  
Emens, David  
Everett, Thomas  
Fahrner, Janice  
FHA  
Fitzgerald, Kathleen M  
Fox, Daniel  
Furseth, Andrew  
Gallagher, Mike &  
Pawlowski, Sue  
Gawenda, Kenneth  
Geiger, Edward  
Ginsing, Sherburne  
Glenzer, David  
Grauman, Michael  
Gruhlke, Dorothy Estate  
Gunning, Michael P  
Hanson, Bruce  
Harper, Duane  
Hein, Dawn  
Henrichs, Daniel  
Herbig, Joseph  
Hildebrandt, Charles M  
Hutman, Keith  
Illman, Judith  
Joles, Judy  
Kaulfuss, Arch  
Kenny, Tom  
Konig, Michael  
Kreb, Keith H  
Krueger, Lori

Lang, Peter  
Larson, Charles Dr  
Lucey, James  
Lukaszewicz, Anna  
Mackie, Helen  
Madsen, Christopher  
Malchow, Adam  
Maldonis, Ryan C  
Malecki, Gail A  
Marquardt, Nancy  
Marsh, Fred  
Martelli, Frank  
Martin, David  
Maslanka, Mary  
Matson, Robert A  
Matteson, Jerry  
McCluskey, Roger Estate  
Mey-Kosbab, Cindy  
Milbauer, Jim  
Miller, Randall,  
Mims, William  
Mueller, Gerald  
Myers, Dale  
Neil, Jardine  
Palmer, Ray  
Parson, Mark  
Paulson, Sara  
Peissig, Angel  
Peneau, Leon  
Petersen, Carol  
Phillips, Jim  
Piater, Arlene Estate  
Pleasant View Cheese Inc  
C/O Bart Nielsen  
Pozorski, David

Puckett, Steve  
Quiring, Brent  
Rasner, Walter  
Rasmussen, Catherine  
Ricker, Harvey  
Rindt, Douglas L Estate  
Rinehart, Glen  
Rohloff, Steve M  
Roush, Richard  
Rust, Charles C  
Rydberg, Douglas  
Sayles, Donald Estate  
Scheuneman, James  
Schroeder, Dale  
Schwenke, Ardres Estate  
Seubert, Mary  
Smazal, Ric  
Sorenson, Paul G  
Spreen, Bryan W  
Steffen, Richard Estate  
Swarey, Enos  
Sweeten, John  
Theime, Kim  
Thomas, Frank  
Vannorman, Karen  
Verdone, Todd J  
Wagner, WM  
Walwarth, Debbie  
Weinke, Sheryl  
Weyenberg, Gerald  
White, Kathy  
Wild, John Estate  
Wilson, David  
Windle, Geraldine  
Woyak, Dean  
Yeager, Wade A

## Michael Schaefer, President/CEO

N1831 State Highway 13, Medford, WI 54451  
715-678-2411 • 800-862-2407  
email: [taylrec@tayloelectric.org](mailto:taylrec@tayloelectric.org)  
website: [www.tayloelectric.org](http://www.tayloelectric.org)

## Lainie Kellnhofer, Editor



Your Touchstone Energy® Partner

