

Since 1940

# WISCONSIN ENERGY *Cooperative* February 2018 NEWS

**SNOW  
MUCH FUN**

**TAYLOR ELECTRIC**  
*Cooperative*  
Your Touchstone Energy® Partner 



# ANNUAL MEETING TO BE HELD APRIL 7, 2018

## Time for Director Elections

Taylor Electric Cooperative’s 82nd annual meeting will be held at the Medford Area Senior High School in Medford on Saturday, April 7, 2018. One of the most important duties of the members at this meeting will be to elect members to fill two seats on the board of directors.

The Bylaw provision for nominating a member to serve on the board is as follows:

*(Article V) Section 3. Nomination and Election of Directors. It shall be the duty of the Board of Directors to appoint a nominating committee in time to allow the committee to meet at least forty-five (45) days before the date of the annual meeting of the members, at which directors are to be elected. The nominating committee shall consist of three members. The committee chairman shall present the committee’s nominations at the annual meeting.*

*Nominations may also be made*

*by petition signed by not less than 25 members delivered to the Cooperative’s headquarters not less than 7 days prior to the annual meeting. Election shall be by majority vote for each director position. In the event no candidate receives a majority of the votes cast for a position, the candidate receiving the fewest votes shall be dropped from nomination on each successive ballot until one candidate receives a majority of the votes cast.*

The board has appointed the following to serve on the Nominating Committee for the 2018 annual meeting:

- Darlene Peche (715-748-4692)
- Carmen Thiede (715-218-8353)
- Frank Bohte Jr. (715-678-2217)

Please contact any of these Nominating Committee members if you are interested in being nominated for a seat on the board.

At the 2018 annual meeting, there

will be elections for two board seats: the seats currently held by Dean Tesch and Brian Hallgren. (Members are eligible to serve up to five three-year terms.) Both are eligible for re-election.



Dean Tesch



Brian Hallgren

To be on the ballot for election to the board, a member needs to be nominated by the Nominating Committee, or be nominated by petition, which involves getting signatures of not less than 25 members and delivering that nomination petition to the co-op not less than seven days prior to the annual meeting (by March 31, 2018, for the upcoming annual meeting.)

MY CO-OP

## CONGRATULATIONS TO THE WINNERS OF OUR 2017 CHRISTMAS COLORING CONTEST!

The following young artists each received two free passes to Broadway Theater. Thanks to all who entered and brightened up the co-op office with their pictures!



Age group 1–3, Sawyer S.



Age group 4–6, Ivan F.



Age group 7–9, Bridget W.



Age group 10–12, Annabeth B.



# SIMPLE STEPS to lower heating costs



**W**hile cold temperatures mean higher heating bills, don't forget some easy steps to make your home more energy efficient and cost effective this winter.

Energy dollars can pour out of your living space through drafty doors and windows as well as unused portions of the home. The Energy Education Council (EEC) encourages people to make a small investment of time for big dividends in keeping your home or apartment warm and cost efficient this winter.

"Most winterizing steps can pay for themselves relatively quickly with heating bill savings," says Molly Hall, EEC executive director. "And don't overlook simple energy-saving steps such as letting the sun warm rooms on sunny days or closing the damper when the fireplace is not in use. These are effective energy-saving tips that cost you nothing."

Costs associated with heating and cooling account for the majority—about 44 percent—of utility bills. Lowering the thermostat is the easiest way to save energy. Energy use is reduced for every degree dialed down. With an eight-hour setback of 10 degrees, the savings is about 20 percent, about 2 percent each degree lowered over an eight-hour period. If two eight-hour setbacks of 10 degrees lower are used while sleeping and during time away from home, up to 40 percent savings can result.

Turn the thermostat down when you are away from home or sleeping, and keep it to the lowest comfortable level when you're at home. Consider installing a programmable thermostat to automatically adjust the temperature day and night.

Use the following tips to help cut costs and improve heating efficiency and safety.

- Replace your furnace filter every month to save energy and improve heat circulation. And if you haven't already, it's not too late to have a professional check and service your furnace system to ensure peak efficiency and safety.
- Use sunlight's natural heat to your best advantage. Open curtains and blinds on sunny days to let the sunlight warm your home, and close them on gloomy days and at night to keep the heat inside.
- Close your fireplace damper when you're not using the fireplace to prevent heat from escaping and cold from entering through your chimney.
- As long as there's a cold air return, you can close the vent and door for rooms you don't use. Experts say without a cold air return, closing off a room can build up pressures that cause the furnace to work harder.
- If you have older or leaky windows, consider temporary fixes, such as plastic film kits that create the effect of an interior storm window.
- Weather stripping is relatively easy and available at your local home improvement store. Stop drafts from coming in, and heat from leaking out of your home through drafty doors and windows. You could save up to 10 percent of your heating costs by eliminating those leaks.
- Use caulk to seal gaps in the walls of your home or apartment. Wherever different building materials meet, or wiring comes out of a wall, there are gaps that may contribute to the loss of heat in your home.
- Invest in a water heater insulation blanket. If the top of the electric water heater is warm to the touch, you are wasting energy; this means that the heater has to work even harder to heat the water in your home and therefore, uses more energy.
- Use electronic timers for lamps and appliances. Timers can be used to automatically turn appliances on and off. This is especially useful for those times of the day that you are out of the home.
- Using a microwave to cook meals uses much less energy than a conventional oven.
- Replace incandescent light bulbs with more efficient, compact, florescent ones or LED bulbs that use one-fourth of the energy and last substantially longer.

"Most people will be pleasantly surprised to realize double-digit percentage savings on their heating bills by using these simple measures," Hall said. "And don't forget, saving energy is the cheapest and cleanest way to add to our energy supply."

*For more information, visit [www.EfficiencyResource.org](http://www.EfficiencyResource.org). The online Energy Efficiency Resource Center is a service of the non-profit Energy Education Council, supported by hundreds of organizations including utilities, businesses, educators, and other committed to promoting safe and efficient use of energy. Learn more at [www.EnergyEdCouncil.org](http://www.EnergyEdCouncil.org).*

# RESIDENTIAL BATTERY STORAGE is the energy trend to watch

By Anne Prince

In this case, “battery storage” does not refer to the drawer where you put the extra AA batteries for your flashlight! Instead, it refers to an emerging energy trend. Batteries and battery storage are evolving much like the way LED bulbs and lumens have transformed how we light our homes.

## What’s driving battery storage?

Rooftop solar costs are dropping, and community solar options are increasing in popularity. In 2017, wind and solar electricity generation set a record by exceeding 10 percent of U.S. energy generation, according to the Energy Information Agency (EIA). News in the automotive world was dominated by announcements of major automakers stepping up production of electric vehicles (EVs), or in some cases, phasing out gas-powered engines altogether. As EVs gain popularity, charging stations are popping up in places of business and in other public spaces.

So, what does this all mean? Consumers are clearly looking for more renewable energy options. But intermittent power from wind and solar sources creates a need for energy storage. This is where batteries come into play.

An increase in research and development in this energy sector is being driven by EVs and renewable energy trends. While the current focus is primarily on commercial applications, the impact on residential use will eventually follow. We can see improvements in the energy efficiency of lithium-ion batteries. For example, phone, computer, and other types of batteries/charging stations are

holding their charge longer and powering more energy-intensive devices. There are hundreds of lithium-ion batteries, all of which have different capabilities and voltages.

## Does better battery storage mean you can go “off the grid” now?

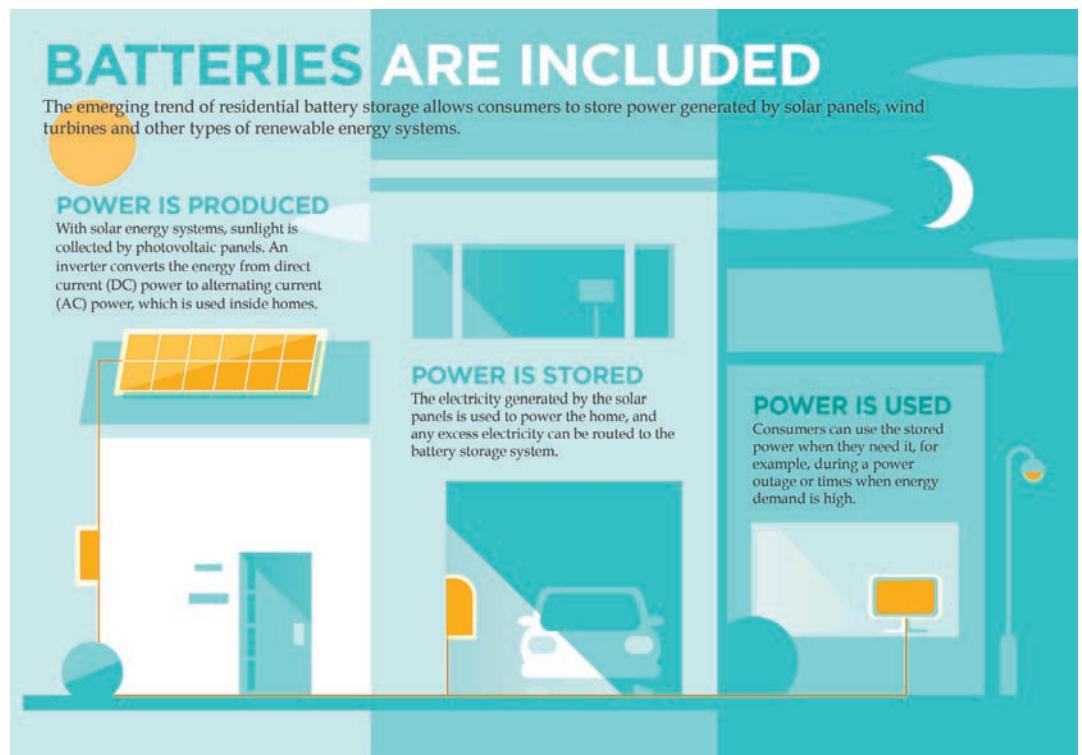
While consumers using rooftop solar or other renewable energy sources have the most to gain, it’s not as easy as you would think to go off the grid completely. Powering the average consumer’s home, including HVAC systems, lights, appliances, and the big-screen TV, requires a tremendous amount of energy. Significant weather variation is another complicating factor. Going off the grid would require a solar array coupled with battery storage that is properly sized based on your energy consumption. Because battery storage technology is evolving and battery banks are not widely available, it is still not yet

cost-effective for the average consumer to purchase.

However, the energy advisors at Taylor Electric are knowledgeable when it comes to energy efficiency and energy choices. Talk to us about your options, like purchasing units of solar from Taylor Electric’s Bright Horizons community solar or time-of-day rates that can help you save energy and money. If you decide to purchase an EV, let us know; your current electric service was designed and sized to meet consumers’ demands when the power lines were originally established and connected. We can also tell you about ideal charging times, like during off-peak hours, which helps conserve energy.

As our energy needs evolve, look to Taylor Electric for the information about energy trends and how to save energy.

*Anne Prince writes on cooperative issues for the National Rural Electric Cooperative Association.*






# Understanding your new TAYLOR ELECTRIC COOPERATIVE ENERGY BILL

Taylor Electric Cooperative has adopted a new billing format in an effort to better serve the membership. This new detailed energy consumption is an easier reading format. To read your new bill format, follow the numbers for a guide to your new billing format.

1. How to contact Taylor Electric.
2. Your Taylor Electric account number.
3. Service Summary shows activity for your account.
4. Taylor Electric Message area for important information/message from TEC pertaining to your cooperative.
5. Account Message area for messages specific to your account.
6. Meter location and meter reading information.
7. Current charges for electric use.
8. Daily usage and cost information.
9. Monthly usage information.
10. How to update your account information.
11. Account number and amount due.

On the reverse side of the bill, you will find helpful tips for power outages, paying your bill, delinquent accounts and service fees.

**Please remember to visit us at [tayloelectric.org](http://tayloelectric.org) and sign up for Smart Hub.** Smart Hub is a fast and convenient way to view usage history information and manage your account.



**TAYLOR ELECTRIC**  
*Cooperative*

Your Touchstone Energy® Partner

N1831 State Hwy. 13, Medford WI 54451-9220

**Questions and Concerns call:**  
Office hours: 7:30 a.m. - 4:00 p.m. Monday -Friday  
Phone: 715-678-2411 or 800-862-2407  
Website Address: [www.tayloelectric.org](http://www.tayloelectric.org)

ANY MEMBER  
ANY OTHER MEMBER  
123 ANYPLACE DR  
ANYWHERE WI 54451-9999

Page 1 of 2  
12/02/2017

**Statement Date** 12/02/2017  
**Account Number** 999999999  
**Payment Due** 12/20/2017

**Service Summary**

Previous Balance	220.45
Payment Received 11/20/2017 <i>Thank You</i>	220.45 CR
Balance Forward	0.00
Current Charges	208.47
<b>Total Amount Due</b>	<b>208.47</b>

**MESSAGE FROM TAYLOR ELECTRIC**  
HAPPY NEW YEAR. MAY 2018 BE THE BEST ONE YET!

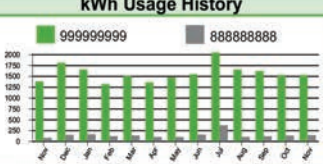
**ACCOUNT MESSAGE**

**\*\* Please Do Not Pay - Your bank account is automatically paying the Amount Due. \*\***

Service Address: 123 ANYPLACE ST

Service Description	Rate	Meter Number	Services From	To	Readings Previous	Present	Mult	kWh Usage
99088888-M9 99077777-S9	RESIDENTIAL CONTROLLED EL HEAT	999999999 888888888	11/01/17 11/01/17	12/01/17 12/01/17	64059 5258	65591 5406	1	1532 148

**kWh Usage History**



COMPARISONS	DAYS	KWH	AVG TEMP	AVG KWH
Current Month	30	1532	29	51
Previous Month	31	1532	48	49
Same Month Last Year	30	1387	39	46

Avg Cost Per Day: \$6.95


**Current Service Detail**

Service Availability Charge - Meter: 999999999	35.10
Local Energy Chg	1,384 kWh @ 0.0351 48.58
Wholesale Energy Chg	1,384 kWh @ 0.0789 109.20
Wholesale PCA	1,384 kWh @ 0.00324 4.48
Water Heater Credit	4.00 CR
Service Availability Charge - Meter: 888888888	4.00
Local Energy Chg	148 kWh @ 0.0071 1.05
Wholesale Energy Chg	148 kWh @ 0.0554 8.20
Wholesale PCA	148 kWh @ 0.00324 0.48
Public Benefit Fee	1.38
<b>Total This Service</b>	<b>208.47</b>

Return this portion with your payment.

Account Name: ANY MEMBER  
ANY OTHER MEMBER

We accept Visa & MasterCard



Pay your bill and get 24/7 account access online at [www.tayloelectric.org](http://www.tayloelectric.org) or call Taylor Electric to pay by phone.

**PLEASE INDICATE CHANGE OF ADDRESS/PHONE NUMBER HERE.**


Address/Box Number		
City	State	Zip
Phone Number		Other Phone

Account Number **999999999**

**Total Amount Due 12/20/2017 208.47**

**Do Not Pay - Paid by Bank Draft**

TAYLOR ELECTRIC COOPERATIVE  
N1831 STATE HWY 13  
MEDFORD WI 54451-9220



53021999999900000020847000021160120220170

We value our Taylor Electric members and continually seek ways to better serve you—our owners!

**Michael Schaefer, President/CEO**  
N1831 State Highway 13, Medford, WI 54451  
715-678-2411 • 800-862-2407  
email: [taylrec@tayloelectric.org](mailto:taylrec@tayloelectric.org)  
website: [www.tayloelectric.org](http://www.tayloelectric.org)  
**Lainie Kellnhofer, Editor**

**TAYLOR ELECTRIC**  
*Cooperative*



Your Touchstone Energy® Partner 