

Since 1940

# WISCONSIN ENERGY

## Cooperative

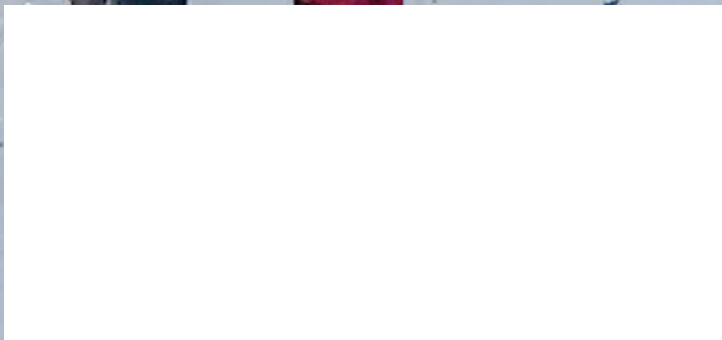
January 2019 NEWS

### JUMP INTO WINTER

at Tri-Norse Ski Park

TAYLOR ELECTRIC  
*Cooperative*

Your Touchstone Energy® Partner



# ANNUAL MEETING MARCH 30

## Time for Director Elections

Taylor Electric Cooperative's 83rd annual meeting will be held at the Stetsonville Centennial Center in Stetsonville on Saturday, March 30, 2019. One of the most important duties of the members at this meeting will be to elect members to fill three seats on the board of directors.

The Bylaw provision for nominating a member to serve on the board is as follows:

*(Article V) Section 3. Nomination and Election of Directors. It shall be the duty of the Board of Directors to appoint a nominating committee in time to allow the committee to meet at least forty-five (45) days before the date of the annual meeting of the members, at which directors are to be elected. The nominating committee shall consist of three members. The committee chairman shall present the committee's nominations at the annual meeting.*

*Nominations may also be made by petition signed by not less than 25 members delivered to the Cooperative's headquarters not less than 7 days prior to the annual meeting. Election shall be by majority vote for each director position. In the event no candidate receives a majority of the votes cast for a position, the candidate receiving the fewest votes shall be dropped from nomination on each successive ballot until one candidate receives a majority of the votes cast.*

The board has appointed the following to serve on the Nominating Committee for the 2019 annual meeting:

Darlene Peche (715-748-4692)

Carmen Thiede (715-218-8353)

Frank Bohte Jr. (715-678-2217)

Please contact any of these Nominating Committee members if you are interested in being nominated for a seat on the board.

At the 2019 annual meeting, there will be elections for three board seats: the seats currently held by Ray Henrichs, JoAnn Smith, and Dennis Engel. Directors are eligible to serve up to five three-year terms. All three are eligible for re-election; however, Henrichs has decided not to seek re-election due to personal reasons.



Ray Henrichs



JoAnn Smith



Dennis Engel

To be on the ballot for election to the board, a member needs to be nominated by the Nominating Committee, or be nominated by petition, which involves getting signatures of not less than 25 members and delivering that nomination petition to the co-op not less than seven days prior to the annual meeting (by March 23, 2019, for the upcoming annual meeting.)



## SEE YOU AT THE ANNUAL MEETING



Michael Schaefer,  
President/CEO

Most of us lead busy lives. We find ourselves multitasking, constantly checking phones and email to keep up with the demands of modern life. Thanks to technology, we can accomplish many tasks electronically and remotely to be more efficient. And with so many pressing obligations, we like to protect our "spare" time. Invitations to attend in-person meetings and gatherings are weighed carefully

as we decide whether or not our time and effort to attend is beneficial. The answer to the question, "What's in it for me?" must be compelling. You may think attending Taylor Electric's annual meeting would be easy to lump into the "no benefit to me" category. However, I'd ask you to think again.

Taylor Electric exists to provide safe, reliable and affordable energy to its consumer-members (that's you!). Equally important is our mission to enrich the lives of all members and to serve the long-term interests of our local communities. This is where you can help.

As a member of the community, you have a perspective that is valuable—and we invite you to share it with the co-op. At the annual meeting, co-op leaders will discuss priorities and challenges, and discuss the financial health and priorities for the coming years. Annual meeting is also the time to vote for new board members who will represent you—the members of the co-op. Board members are local consumers, just like you.

Taylor Electric is one of the few local organizations that is uniquely positioned to bring together all members of the community. It is worth noting that the health of the co-op and the well-being of the community are closely intertwined.

Perhaps you may feel that you have nothing to add to the discussion, so there is no need to attend the annual meeting. However, every energy bill you pay helps ensure better service and reliability for the whole community. Your dollars are reinvested locally into improvements that impact the reliability and affordability of your energy, and we want to hear from you to better inform our decisions as we plan for the future.

While Taylor Electric provides convenient electronic options for bill-paying and communication, there are times when there is no substitute for in-person engagement. When members of our community come together for a common purpose, we improve the quality of life in our corner of the world.

If you've never attended our annual meeting, or if it's been awhile, please stop by. Our co-op family looks forward to visiting with you! We'll have food, fun and door prizes, so mark your calendar for the annual meeting on March 30, 2019 at the Stetsonville Centennial Center. (PLEASE NOTE THE CHANGE IN LOCATION THIS YEAR.)

# AMERICA'S ELECTRIC COOPERATIVES POST-ELECTION PRIORITIES

With the midterm elections in the rear-view mirror, Taylor Electric is looking ahead at the impact and opportunities for rural America and electric cooperatives.

Electric cooperatives across the nation played an active role in the midterm election and worked to get to know each candidate running for federal office. This was particularly important since more than 60 members of Congress decided to

retire or run for other office.

Through Co-ops Vote, a nonpartisan political engagement effort led by the National Rural Electric Cooperative Association, more than 100 candidates attended electric co-op functions or met with co-op staff. Several statewide co-op associations, including Wisconsin's, provided opportunities for gubernatorial candidates to share their views.

As we continue getting to know our new elected officials, Taylor Electric will continue advocating for policies that protect local business interests and advance the quality of life in our community.

Improving our nation's aging infrastructure is a great place to start. Congress and the White House should explore an infrastructure package that benefits all Americans, especially those at risk of being left behind in rural America. And this investment needs to go beyond roads and bridges. Congress should leverage an infrastructure package to help maintain and modernize the electric grid and connect rural communities to the modern economy.

The new Congress also presents an opportunity to expand access to high-speed internet service in rural communities that currently lack it. According to the FCC, 23 million rural Americans lack access to broadband internet—most of them are members of an electric co-op. Roughly 100 electric co-ops are working to close the digital divide by bringing broadband to their communities.

Despite that progress, an expanded combination of grants and loans is necessary to continue providing rural communities with the wherewithal for education, telemedicine, and a 21st century economy. Everyone—the Trump administration and both Democrats and Republicans in Congress—agrees on the need to bolster rural broadband.

A third area of possible bipartisan agreement lies in the need to produce a new farm bill. The farm bill, which authorizes numerous rural economic development programs, traditionally has enjoyed bipartisan support in Congress. Although the House and Senate have passed very different versions of a farm bill this year, we're hopeful that lawmakers can come to an agreement on a compromise bill that promotes rural economic development and protects Rural Utilities Service electric loan funding on which electric co-ops depend.

Electric cooperatives like Taylor Electric are engines of economic development, and we are proud to continue working towards a brighter and more prosperous rural America.—NRECA

## Downed and Dangerous

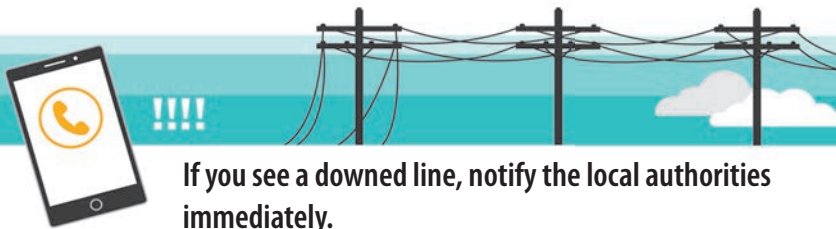
If you see a downed power line, always assume it is energized and dangerous. Avoid going near it or anything in contact with the power line.



Downed power lines can energize the ground up to 35 ft. away – so keep your distance.



Never drive over a downed line or through water that is touching the line.



If you see a downed line, notify the local authorities immediately.



Never try to move a downed power line, even if you think the line is deenergized or if you're using a non-conductive item – this will not prevent injury or death!

Source: ESFI.org

# TAYLOR ELECTRIC COOPERATIVE INCENTIVES

Effective January 1, 2019 – Incentives subject to change without notice

2019 Incentive

## ENERGY STAR APPLIANCES

Clothes Washer	\$25 per unit
Clothes Dryer	\$25 per unit
Clothes Dryer – Heat Pump – <i>all heat pump clothes dryers qualify</i>	\$50 per unit
Refrigerator $\geq$ 10 cubic feet	\$25 per unit
Dishwasher	\$25 per unit
Dehumidifier	\$25 per unit
Recycling – Refrigerator/Freezer/Room A/C ( <i>signed certification required – must be working</i> )	\$25 per unit

## CONSERVATION

Flow Restrictor – shower ( <i>2.5 gal. per min. or less – capped at 20% of cost</i> )	\$5 per unit
Flow Restrictor – faucet ( <i>1.5 gal. per min. or less – capped at 20% of cost</i> )	\$1 per unit
Electric vehicle charging station ( <i>must be controlled as defined by the co-op</i> )	\$200 per unit

## AUDITS & ASSESSMENTS

Compressed Air Audit	20% cost of audit, \$500 max.
Audit Recommended Improvements	20% of cost measures implemented, \$500 max.
Touchstone Energy Home Program—new home, must meet one of five requirements	\$500 each

## ELECTRIC WATER HEATER\*\*\*

Commercial and Residential—75-99 gallon ( <i>Energy Factor .90+, Residential</i> )	\$125 per unit
Commercial and Residential—100 gallon+ ( <i>Energy Factor .85+, Residential</i> )	\$300 per unit
Solar storage, w/electric auxiliary tank	\$300 per unit
Heat pump water heater ( <i>Integrated [all-in-one] units, Energy Factor 2.0 or greater</i> )	\$300 per unit

## LIGHTING

LED bulb (residential & non-residential) – capped at 20% of cost	Not to exceed	\$1 per bulb – 5 bulb minimum
LED fixture (residential & non-residential) – capped at 20% of cost	“ “ “	\$1 per fixture per 800 lumens
LED Exit signs – capped at 20% of cost	“ “ “	\$5 per sign
Occupancy Sensors – capped at 20% of cost ( <i>excludes motion detectors</i> )	“ “ “	\$5 each

## A/C & HEATING\*\*\*\*

Heat Pump – Air-Source & MiniSplit ( <i>14+ SEER, 8.2+ HSPF, or EER 11+</i> )	\$200 per ton
Heat Pump – Commercial Air Source & PTHPs ( <i>Less than 20 ton: EER 11.5+ 20 to less than 60 ton: EER 10.5+, Greater than or equal to 60 ton: EER 10+</i> )	\$200 per ton
Heat Pump – Geothermal	\$400 per ton
New Furnace w/ECM Blower Motor – <i>Variable speed motor (not multi-speed) “or” AFUE <math>\geq</math> 95% &amp; Eae <math>\leq</math> 670 kwh/year</i>	\$35 per unit
Dual Fuel (8 KW min. – new installations)	TEC only – \$100 bill credit
ETS units	TEC only – \$30 per KW
Electric hydronic or slab	TEC only – \$20 per KW

## AGRICULTURAL & C&I

Commercial Vending Machine Controls	\$25 each
Dairy Plate Cooler/Well Water Pre-cooler	\$500 per unit
Dairy Heat Recovery w/Electric Backup	\$300 per unit
Low/zero Energy Livestock Waterer ( <i>500 watts or less, insulated tank</i> )	\$50 per unit
Scroll Refrigeration Compressor ( <i>max. \$1,000 per compressor</i> )	\$30 per HP
Variable Frequency Drive ( <i>max. \$1,000/drive, min. 1 HP</i> )	\$30 per HP
Ag Fan – Exhaust, less than 36” ( <i>18 cfm/Watt or more</i> )	\$1 per inch diameter
Ag Fan – Exhaust, greater than 36” ( <i>21 cfm/Watt or more</i> )	\$1 per inch diameter
Ag Fan – Circulation, less than 36” ( <i>18 ft. lbs./kW or more</i> )	\$1 per inch diameter
Ag Fan – Circulation, greater than 36” ( <i>21 ft. lbs./kW or more</i> )	\$1 per inch diameter
Electric Forklift Battery Charger – <i>must be controlled by co-op</i>	\$200 each

\*\*\*Water heater rebates require installation of co-op's Load Management (LM) control.

\*\*\*\*A/C and heat pumps require LM only when separately metered for off-peak rates.

\*\*\*\*\*Dual Fuel, ETS, & hydronic or slab systems require LM control to qualify for incentive. (timeclock control when under the time of day rate is acceptable.)

Maximum rebate = \$20,000 per member account per year.

Most rebates must be applied for within 6 months of purchase.

Plus, call FOCUS ON ENERGY 800-762-7077

MY CO-OP



*Taylor Electric Cooperative*  
**BRIGHT  
 HORIZONS**

## Why not try community solar?

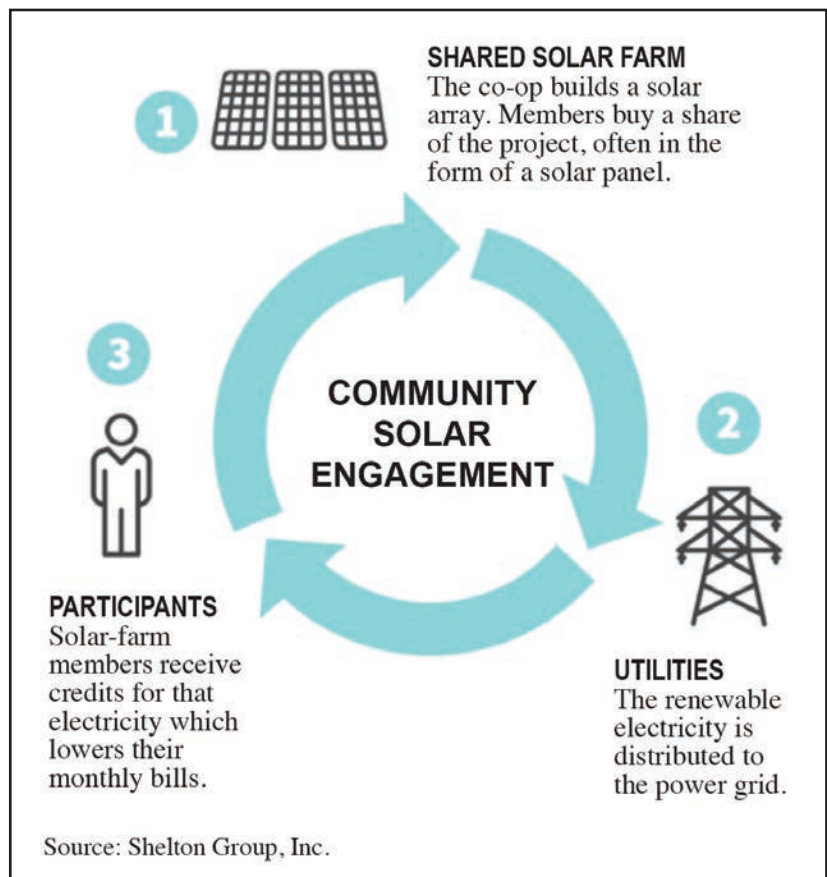
If you have considered solar as a part of your home's energy mix but have been dissuaded by high costs or maintenance requirements, we here at Taylor Electric are happy to tell you that solar energy is more accessible than you might think!

Taylor Electric's Bright Horizons solar garden, located at our office on Highway 13, comprises 274 saleable units. Community solar programs harness natural energy from the sun and cost less than installing a solar system at your home or business.

The community solar model is easy to understand. Bright Horizons solar array is a group of solar panels located in the field next to the cooperative's office. You purchase a share of the energy produced, often in the form of one or more solar panels. The energy is distributed to the power grid, and solar-farm members receive credits that lower their electric bills.

Participating in a community solar program also eliminates maintenance costs and concerns that can be a hassle for those who own and maintain their own residential solar system. With community solar, Taylor Electric takes care of installation, maintenance, and insurance fees, making it easy for members to participate.

To learn more about community solar, call us today at 715-678-2411.



**Michael Schaefer, President/CEO**

N1831 State Highway 13, Medford, WI 54451  
 715-678-2411 • 800-862-2407  
 email: [taylrec@tayloelectric.org](mailto:taylrec@tayloelectric.org)  
 website: [www.tayloelectric.org](http://www.tayloelectric.org)

**Lainie Kellnhofer, Editor**



Your Touchstone Energy® Partner

