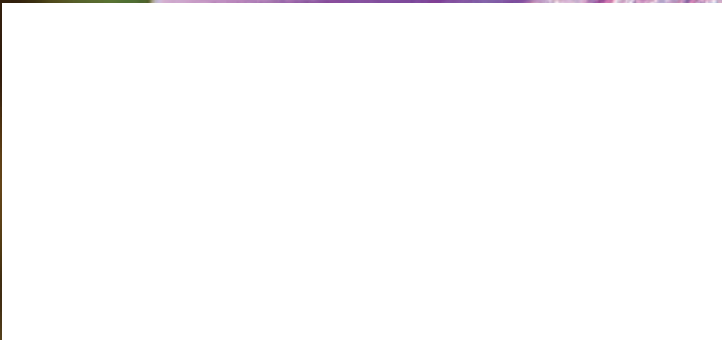


Since 1940

# WISCONSIN ENERGY *Cooperative* NEWS

May 2021

## WILD FOR FLOWERS



TAYLOR ELECTRIC  
*Cooperative*  
Your Touchstone Energy® Partner





## SPRING SAFETY CONCERNS AND ANNUAL MEETING QUESTIONS

By Kenneth Ceagske, President/CEO

Spring is the time to head out into the woods and fields that have been covered in a blanket of white for so many months. Please be aware of your surroundings for things

that may have changed due to the change of season. From our perspective, watch for line equipment showing damage, low hanging wires, trees that are broken from winter snow loads and are leaning towards the line, or anything else that may cause damage to our lines. Call us at the office if you see anything with the power lines that concerns you—we will get out and take a look at it. For your own safety, watch for all of those things that seasonal changes may bring—trees that are falling but hung up on one another, erosion damage from spring runoff—and take a good look at equipment that hasn't run since last fall to be sure there is no damage that could cause an unexpected failure.

Our line crews have been spending time this spring testing overhead transformers for PCBs, a chemical used in some of the older transformers on the system. The process to get through the whole system will take a few years but is well worth it. If you see the crews pull in, go up in the air for a little bit, then come back down and leave, it is likely that they just collected a sample to send off for testing.

Spring also points us toward annual meeting time. Our annual meeting is scheduled for the evening of June 29 this year. The plan is to hold it outdoors, drive-in style again this year, with an inclement weather plan to move indoors. There will be

elections for three open seats, and a few bylaw changes up for review.

I have received one question regarding the change to plurality (the greatest number of votes received) vs. majority (50%+1 vote) to determine the winner of an election. If the “other than in person” voting is approved this is a must-have. The only way to reduce a list of candidates from a few to as little as two is to have run-off elections, which would prove problematic and costly if we were to mail ballots for every reduction in candidates until there was a majority winner. If “other than in person” voting is not approved, it is still a desirable change to keep the voting process efficient and keep the meeting from getting too long.

Many cooperatives have districts where there can be limited numbers of candidates per district, which naturally limits the likelihood of many candidates for one seat. For example, candidates A & B are from district 1, candidates C & D are from district 2. All our board seats are based on at-large districts, meaning any candidate can come from any area and is eligible for any seat.

In the case of the above example using our current method, candidates A, B, C, and D all run for board seat number one, until one receives 50%+1, then the remaining three run for seat #2 in a similar way. The change to plurality would allow for a single ballot, vote for two candidates, and the highest two candidates win the seats. It appears that we have five candidates running including the two incumbents who are running again.

## Youth Leadership Congress is going VIRTUAL this year!



*You must have your own internet access to participate.*

Youth Leadership Congress is an annual event hosted by the Wisconsin Electric Cooperative Association (WECA) and Wisconsin electric cooperatives. The event engages high school students in activities that emphasize team building, cooperative business knowledge, life skills, and leadership skills. Past attendees have found it motivating, educational and—of course—fun! Attending YLC also allows you to be eligible to attend the National Youth Tour in Washington, D.C., the next year. Contact Taylor Electric Cooperative for more information.

**Who: High School Sophomores and Juniors, whose parents are Taylor Electric Cooperative members**

**When: July 13–14, 2021**

**Time: 8 a.m. – noon both days**

**Price to you: FREE**





# SAFETY BEFORE AND AFTER THE STORM

Severe storms are more common in the spring and summer, but they can occur any time of year. Be prepared for storms and know how to stay safe.

## Before the Storm:

Assemble a kit of essentials, like water, battery-operated flashlights, and radios. Keep a list of emergency phone numbers, including the electric utility. Be prepared for the possibility of a prolonged outage due to power line and electric equipment damage.

If severe weather is on its way, pay attention to local weather reports and recommendations. A tornado or severe storm watch means conditions are favorable for those weather conditions forming. A warning means dangerous weather conditions are developing and imminent.

Lightning can travel up to 10 miles away from a storm, so seek shelter when you hear thunder.

Consider installing ground fault circuit interrupters (GFCIs) or purchasing a portable GFCI. GFCIs detect dangerous electrical situations and cut off power before a person can be shocked. These situations are likely to occur around water, so GFCIs should be installed in bathrooms, laundry rooms, kitchens, basements, outdoors, and anywhere else water and electricity may meet.

If power goes out, switch off lights, large electronics, and appliances to prevent overloading circuits and damaging appliances when power is restored. Leave one lamp or switch on as a signal for when your power returns.

## After the Storm:

When venturing outside, stay away from downed power lines and be alert to the possibility that tree limbs or debris may hide an electrical hazard. Assume any dangling wires you encounter are energized and dangerous. Stay away, and warn others to stay away and contact the electric utility.

If you are driving and come upon a downed power line, stay in your vehicle, warn others to stay away, and contact emergency personnel or the electric utility. Also, when driving, be careful at intersections where traffic lights may be out. Stop at all railroad crossings and treat road intersections with traffic signals as a four-way stop before proceeding with caution.

Before re-entering storm-damaged buildings or rooms, be sure all electric and gas services are turned off. Never

attempt to turn off power at the breaker box if you must stand in water to do so. If you can't reach your breaker box safely, call your electric utility to shut off power at the meter.

Never step into a flooded basement or other area if water is covering electrical outlets, appliances, or cords. Be alert to any electrical equipment that could be energized and in contact with water. Never touch electrical appliances, cords, or wires while you are wet or standing in water.

Do not use water-damaged electric items until a qualified electrician has inspected them and ensured they are safe. When using a portable generator, follow all manufacturer's recommendations. Keep the generator dry and never plug it into a wall outlet or directly into the home's wiring. This could inadvertently energize the utility lines and injure yourself or others working to restore power.

A permanent standby generator should be professionally installed and include a transfer switch to prevent electricity from leaving your generator and going into power lines where it can kill line workers.—*Safe Electricity*

# Hey Third-graders:

**MAY IS ELECTRICAL SAFETY MONTH**, and the Wisconsin Electric Cooperative Association (WECA) is seeking entries for the 2021 electrical safety poster contest. All local third-grade children, whose parents are members of the cooperative, are invited to submit an original poster that supports electrical safety. All who enter will have a chance to win local and state-level prizes. Just bring your original artwork to Taylor Electric by **May 17** for your chance to win the local prize of a **\$25 gift card**. We will then choose three to send on to WECA for the state-level prizes which include:

**1st - Chromebook • 2nd - \$100 gift card • 3rd - \$75 gift card**

*Sharpen your crayons and put get those "bright" minds thinking!*



## Safety Poster Contest

### Registration and Rules Form

Form **MUST** be filled out completely to be entered into the contest.

Student's Name: \_\_\_\_\_ Student's Age: \_\_\_\_\_

Student's School: \_\_\_\_\_

Parents/Guardian Name: \_\_\_\_\_

Parents/Guardian Email: \_\_\_\_\_

Parents/Guardian Phone Number: \_\_\_\_\_

Mailing Address: \_\_\_\_\_

City, State, Zip \_\_\_\_\_

Electric Cooperative: \_\_\_\_\_

By entering the contest, each contestant and/or parent/guardian agrees the submission is the artist's original work and consents to use of the artist's first and last name and artwork in publications, exhibits, displays, social media, and websites, as determined by the local electric cooperative and the Wisconsin Electric Cooperative Association. Original drawing/artwork will not be returned to the participant.

#### Rules:

- Free entry
- One entry per 3rd grade student
- The poster must be themed around Electrical Safety
- No computer generated images will be accepted
- The poster must not be any larger than 11-x14-inches
- Entries must include completed entry form (above)
- Students name must be written on the back of the poster
- Entries must be submitted to your local electric cooperative no later than May 17, 2021

#### To learn more about electrical safety, visits these websites:

<https://www.youtube.com/watch?v=8YXMGIVcYU>  
[https://www.youtube.com/watch?v=9V1\\_x-Az\\_w4](https://www.youtube.com/watch?v=9V1_x-Az_w4)  
<https://www.youtube.com/watch?v=RGyUKKf8pxl>

[https://www.youtube.com/watch?v=3\\_pA0jeI5w8&t=16s](https://www.youtube.com/watch?v=3_pA0jeI5w8&t=16s)  
<https://www.youtube.com/watch?v=PYKrVN63690>  
<https://www.youtube.com/watch?v=6PgWGoZUnsk&t=59s>



# ELECTRICITY 101

To stay safe around electricity, start with these **SEVEN** basic tips:



1.

## DON'T OVERLOAD OUTLETS OR CIRCUITS

Plugging in too many items or drawing too much power on a circuit can cause overheating, fire, and damage to devices.



2.

## DON'T USE FAULTY ELECTRICAL CORDS OR PLUGS

Do not use cords that look frayed, worn or cracked. Do not use broken plugs. Never remove the grounding pin from a three-pronged plug.



3.

## HAVE YOUR ELECTRICIAN'S NUMBER IN YOUR PHONE

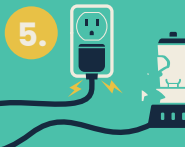
Most electrical repairs or installations are not DIY projects. Hire an expert to avoid serious injury or wiring problems.



4.

## BE CAREFUL AROUND H<sub>2</sub>O

Never use electricity while standing in damp or wet conditions. Keep all electrical devices away from water, including cell phones that are charging.



5.

## EVALUATE YOUR APPLIANCES

Do not use appliances in disrepair. Older or broken appliances can overheat, start a fire, and cause serious injuries.



6.

## TEST YOUR GFCIs

Outlets near a water source should be equipped with GFCIs, which help prevent shock and electrocution caused by ground faults. Test monthly to make sure they are working.



7.

## MAKE SURE YOUR HOME IS UP TO CODE

Your home should be properly wired and electrically sound. Contact a reputable electrician to evaluate your home.

**MAY IS ELECTRICAL SAFETY MONTH**

 **Safe Electricity.org**

## SAVE THE DATE!



Taylor Electric Cooperative's annual meeting will be held Tuesday, June 29. Watch the June issue of the *Wisconsin Energy Cooperative News* for more details.

## MEMORIAL DAY

*Remember and Honor*



Our office will be closed Monday, May 31



### Kenneth Ceaglske, President/CEO

N1831 State Highway 13, Medford, WI 54451  
715-678-2411 • 800-862-2407  
email: [taylrec@tayloelectric.org](mailto:taylrec@tayloelectric.org)  
website: [www.tayloelectric.org](http://www.tayloelectric.org)

**Lainie Kellnhofer, Editor**

**TAYLOR ELECTRIC**  
*Cooperative*



Your Touchstone Energy® Partner

