

# Taylor Report



March 2024

N1831 State Highway 13, Medford, WI 54451 • 715-678-2411 • [www.taylorselectric.org](http://www.taylorselectric.org)

## Clearing the Path to Reliability

Trees are majestic, beautiful and good for the soul. But we also know that our members depend on us to deliver reliable power to their homes and businesses. That's why Taylor Electric strives to balance maintaining the beautiful surroundings we all cherish with ensuring reliable electricity. You might not realize it, but there are several benefits to regular tree trimming.

### Reliability

Keeping power lines clear of overgrown vegetation improves service reliability. After all, we've seen the whims of Mother Nature during severe weather events with fallen tree limbs taking down power lines and utility poles. While many factors can impact power disruptions, about half of all outages can be attributed to overgrown vegetation.

This is why you sometimes see Taylor Electric's contractors, Makovsky Brush Service, out in the community trimming trees near power lines. They have been trained and certified based on the latest industry standards.

In fact, all U.S. electric utilities are required to trim trees that grow too close to power lines. Scheduled trimming throughout the year keeps lines clear from overgrown or dead limbs that are likely to fall, and we are better able to prepare for severe weather events.

### Safety

Working near power lines can be dangerous, and we care about your safety and that of our lineworkers. For example, if trees are touching power lines in our members' yards, they can pose a grave danger to families. If children can reach those trees, they can potentially climb into a danger zone. Electricity can arc, or jump, from a power line to a nearby conductor such as a tree.

Any tree or branch that falls across a power line creates a potentially dangerous situation. A proactive approach lessens the chances of fallen trees during severe weather events that

make it more complicated and dangerous for lineworkers to restore power.

### Affordability

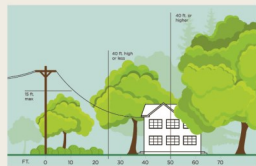
As a co-op, Taylor Electric always strives to keep costs down for our members. If trees and other vegetation are left unchecked, they can become overgrown and expensive to correct. A strategic vegetation management program helps keep costs down for everyone.

When it comes to vegetation management, there are ways you can help too. When planting new trees, make sure they're planted a safe distance from overhead power lines. Medium-height trees (40 ft. or smaller) should be planted at least 25 ft. from power lines. Taller trees (over 40 ft.) should be planted at

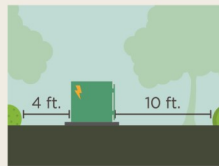
## 3 Ways to Help Limit Tree Trimming

Did you know electric utilities are required to trim trees and other types of vegetation that grow too close to overhead power lines? We know you love your trees, and we will do everything we can to avoid trimming them. Here's how you can help:

**1. Plant trees in the right place.** Trees that will be <40 ft. should be planted at least 25 ft. away from power lines (>40ft. should be at least 50 ft. away).



**2. Don't block pad-mounted transformers.** Plant shrubs at least 10 ft. away from transformer doors and 4 ft. from transformer sides.



**3. Report dangerous branches.** If you spot a tree or branch that is dangerously close to power lines, please let us know.



**Trimming improves safety for all. Let's work together to enjoy the beauty of trees and reliable electricity.**

least 50 ft. from power lines. You can also practice safe planting near pad-mounted transformers. Plant shrubs at least 10 ft. from the transformer door and 4 ft. from the sides. If your neighborhood has underground lines, remember to contact 811 before you begin any project that requires digging.

Additionally, if you spot an overgrown tree or branch that's dangerously close to overhead lines, please let us know by contacting 715-678-2411. The service is free if the tree is located before the meter. Anything after the meter, is the member's responsibility.

We have deep roots in our community, and we love our beautiful surroundings. It takes a balanced approach, and our vegetation management program is a crucial tool in ensuring service reliability.



**The office will be closed on Good Friday, March 29th. Have a safe and blessed Easter holiday!**

## Board Report – January 2024

- Approved December disbursements totaling \$353,764. 14 new member applications and December 2023 construction in the amount of \$115,276.
- Reviewed financial results for December with \$513,633 Operating Margins and \$989,625 Total Margins year to date.
- There were 5 outages in December, with an average YTD outage time per meter of 1.7874 hours.
- Two applications for discounted early retirement of capital credits to estates were approved with total capital credits of \$2,111 to be paid out at the net present value of \$710.
- 26 delinquent accounts were processed for collection following the January 20th due date. The total amount owing on these accounts is \$13,619.
- Other topics covered included final approval of the Emergency Load Reduction Plan, net metering/net billing concepts, DPC activities, Strategic Plan update, Operation Roundup, past meeting reports, and upcoming meetings.

## THE RESULTS ARE IN...

Results are in from the Nominating Committee! Two candidates have expressed interest in running for the two open seats on Taylor Electric's board. They include incumbents, Brian Hallgren and Cheri Klussendorf. If you have interest in running for the board and missed the deadline for the Nominating Committee process, you can still make it on the ballot by completing a petition signed by not less than 25 coop members delivered to the coop by April 26, 2024. Petition forms are available at the office.

## PLEASE NOTE:

## WE'RE CHANGING LOCATIONS!

The annual meeting will be held at the Simek Rec. Center, 1037 W Broadway Ave, Medford, WI 54451 on Tuesday, June 25, 2024. Watch this report and the WI WEC NEWS for details!

## SPRING FORWARD

Remember to set your clocks forward one hour.



**RESET YOUR CLOCKS—Daylight savings begins Sunday, March 10th at 2:00 AM.** Also, please note: the new on-peak hours are shorter by two hours in summer and winter and by one hour in the spring and fall. In summer (June-Aug), the new on-peak hours will be from 1–7 p.m. and all other months (Sep-May) will be 4–8 p.m. Weekends and holidays are always off-peak.



## Hey High School Seniors!

Don't forget scholarship applications are due by April 6, 2024. Forms are available through most area high school counselors, online at [www.taylorelectric.org](http://www.taylorelectric.org) or just give us a call and we'll send you a form. Let us help pay for your college education!

*NOTE: The funds for these scholarships are derived from unclaimed capital credit refunds. Chapter 185 of the Wisconsin Statutes provides that unclaimed refunds may be used for educational and charitable purposes. Otherwise, they become unclaimed property and must be paid to the State of Wisconsin as such.*

## JOIN US AT THE MEDFORD HOME AND BUSINESS EXPO

Simek Rec Center  
1037 W Broadway Ave  
Medford, WI 54451

Friday-March 22 - 4pm - 8pm  
Saturday-March 23 - 10am - 4pm  
Sunday-March 24 - 10am - 3pm

